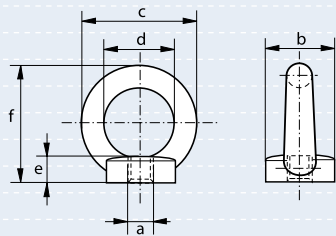


## Stainless Steel Eyebolts generally to DIN 580

- **Material** : stainless steel AISI 316
- **Standard** : generally to DIN 580
- **Finish** : polished

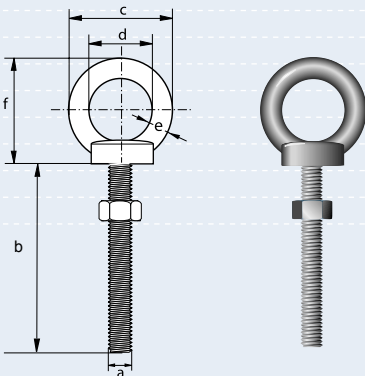
diameter thread	diameter base	diameter eye outside	diameter eye inside	length thread	thickness base	height	weight per 100 pcs
a mm	b mm	c mm	d mm	e mm	f mm	g mm	kg
6	20	36	20	13	6	36	6.0
8	20	36	20	13	6	36	6.0
10	25	45	25	17	8	45	10.3
12	30	54	30	20.5	10	53	17.7
16	35	63	35	27	12	62	28.0
20	40	72	40	30	14	71	42.4
24	50	90	50	36	18	90	83.4
30	65	108	60	45	22	109	122.0



## Stainless Steel Eyenuts generally to DIN 582

- **Material** : stainless steel AISI 316
- **Standard** : generally to DIN 582
- **Finish** : polished

diameter thread	diameter base	diameter eye outside	diameter eye inside	thickness base	height	weight per 100 pcs
a mm	b mm	c mm	d mm	e mm	f mm	kg
6	20	36	20	8.5	36	5.2
8	20	36	20	8.5	36	5.2
10	25	45	25	10	45	9.4
12	30	54	30	11	53	16.0
16	35	63	35	13	62	24.0
20	40	72	40	16	71	35.2
24	50	90	50	20	90	70.6
30	65	108	60	25	109	132.0



## Stainless Steel Long Eyebolts with nut and washer

- **Material** : stainless steel AISI 316
- **Finish** : polished

diameter thread	length thread	diameter eye outside	diameter eye inside	thickness eye	height	weight per 100 pcs
a mm	b mm	c mm	d mm	e mm	f mm	kg
6	80	26	16	5	30	3.0
8	100	31	19	6	36	7.0
10	100	41	25	8	40	13.0
12	120	47	27	10	45	24.0