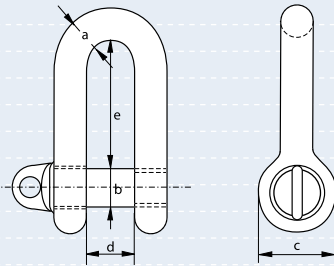


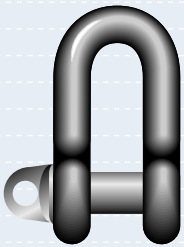


## Small Dee Shackles - Quality Range with type A screw collar pin

- **Material** : bow and pin high tensile steel
- **Safety Factor** : MBL equals 5 x WLL
- **Standard** : B.S. 3032 table 1 - 1958
- **Finish** : self colour or hot dipped galvanised
- **Certificates** : as standard a works certificate is supplied  
also available upon request a certificate of basic raw material  
and/or an EC declaration of conformity

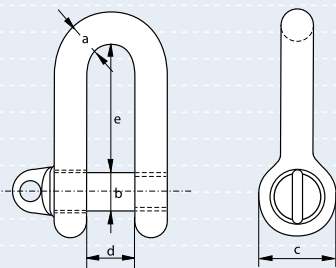


working load limit	diameter bow	diameter pin	diameter eye	inside width	inside length	weight each
tons	a inch	b inch	c inch	d inch	e inch	kg
0.30	1/4	3/8	3/4	3/8	7/8	0.06
0.60	3/8	1/2	1	5/8	1 3/8	0.15
1.00	1/2	5/8	1 1/4	7/8	1 7/8	0.33
1.75	5/8	3/4	1 1/2	1	2 1/4	0.61
2.50	3/4	7/8	1 3/4	1 1/4	2 3/4	0.93
3.50	7/8	1	2	1 3/8	3 1/4	1.80
4.50	1	1 1/8	2 1/4	1 1/2	3 5/8	2.15
5.50	1 1/8	1 1/4	2 1/2	1 3/4	4 1/8	3.02
7.00	1 1/4	1 3/8	2 3/4	1 7/8	4 1/2	4.20
8.00	1 3/8	1 1/2	3	2 1/8	5	5.34
10.75	1 1/2	1 3/4	3 1/2	2 3/8	5 1/2	8.36
13.00	1 5/8	1 7/8	3 3/4	2 1/2	5 7/8	9.35
14.75	1 3/4	2	4	2 3/4	6 3/8	12.39
16.75	1 7/8	2 1/8	4 1/4	2 7/8	6 3/4	15.30
19.00	2	2 1/4	4 1/2	3	7 1/4	18.40



## Small Dee Shackles - Economy Range with type A screw collar pin

- **Material** : bow and pin high tensile steel
- **Safety Factor** : MBL equals 5 x WLL
- **Standard** : generally to B.S. 3032 table 1 - 1958
- **Finish** : self colour
- **Certificates** : as standard a works certificate is supplied  
also available upon request a certificate of basic raw material  
and/or an EC declaration of conformity



working load limit	diameter bow	diameter pin	diameter eye	inside width	inside length	weight each
tons	a inch	b inch	c inch	d inch	e inch	kg
0.30	1/4	3/8	3/4	3/8	7/8	0.06
0.60	3/8	1/2	1	5/8	1 3/8	0.15
1.00	1/2	5/8	1 1/4	7/8	1 7/8	0.33
1.75	5/8	3/4	1 1/2	1	2 1/4	0.61
2.50	3/4	7/8	1 3/4	1 1/4	2 3/4	0.93
3.50	7/8	1	2	1 3/8	3 1/4	1.80
4.50	1	1 1/8	2 1/4	1 1/2	3 5/8	2.15
5.50	1 1/8	1 1/4	2 1/2	1 3/4	4 1/8	3.02
7.00	1 1/4	1 3/8	2 3/4	1 7/8	4 1/2	4.20
8.00	1 3/8	1 1/2	3	2 1/8	5	5.34
10.75	1 1/2	1 3/4	3 1/2	2 3/8	5 1/2	8.36