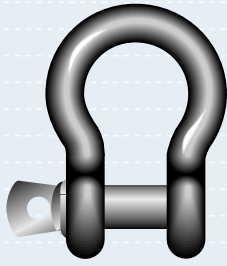
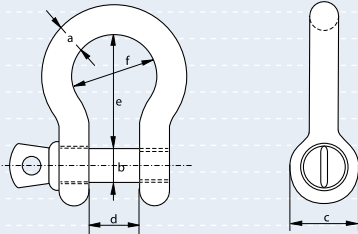


## Silver Pin Bow Shackles - Economy Range with screw collar pin

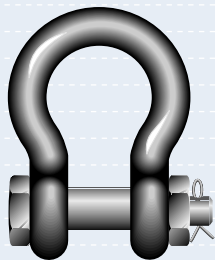


- **Material** : bow and pin high tensile steel, Grade 6
- **Standard** : generally to US Fed. Spec. RR-C-271
- **Finish** : hot dipped galvanised
- **Certificates** : as standard a works certificate is supplied  
also available upon request is a certificate of basic raw material and/or an EC declaration of conformity

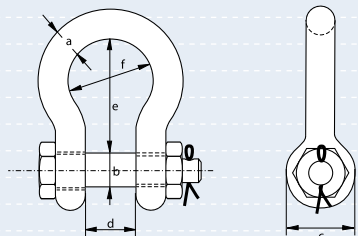


working load limit	diameter bow	diameter pin	diameter eye	width inside	length inside	width bow	weight each
tons	a mm	b mm	c mm	d mm	e mm	f mm	kg
0.33	5	6	14	9.5	22	15	0.03
0.5	6	8	16	12	29	20	0.05
0.75	8	10	19	13.5	31	21	0.09
1	10	11	23	17	37	26	0.14
1.5	11	13	27	19	43	29	0.17
2	13	16	30	20	48	33	0.33
3.25	16	19	38	27	60	43	0.62
4.75	19	22	46	32	71	50	1.07
6.5	22	25	53	36	84	58	1.64
8.5	25	28	61	43	95	68	2.28
9.5	28	32	68	46	108	74	3.36
12	32	35	76	51	119	82	4.31
13.5	35	38	84	57	133	92	6.14
17	38	42	92	60	146	98	7.81
25	45	50	106	73	177	127	12.61
35	50	57	119	83	197	138	18.33
55	65	70	145	105	260	185	37.90

## Silver Pin Bow Shackles - Economy Range with safety bolt



- **Material** : bow and pin high tensile steel, Grade 6
- **Standard** : generally to US Fed. Spec. RR-C-271
- **Finish** : hot dipped galvanised
- **Certificates** : as standard a works certificate is supplied  
also available upon request is a certificate of basic raw material and/or an EC declaration of conformity



working load limit	diameter bow	diameter pin	diameter eye	width inside	length inside	width bow	weight each
tons	a mm	b mm	c mm	d mm	e mm	f mm	kg
0.75	8	10	19	13.5	31	21	0.10
1	10	11	23	17	37	26	0.16
1.5	11	13	27	19	43	29	0.22
2	13	16	30	20	48	33	0.36
3.25	16	19	38	27	60	43	0.76
4.75	19	22	46	32	71	50	1.23
6.5	22	25	53	36	84	58	1.79
8.5	25	28	61	43	95	68	2.57
9.5	28	32	68	46	108	74	3.75
12	32	35	76	51	119	82	5.32
13.5	35	38	84	57	133	92	7.19
17	38	42	92	60	146	98	9.44
25	45	50	106	73	177	127	15.40
35	50	57	119	83	197	138	20.06
55	65	70	145	105	260	185	41.40