

Eyebolts

metric coarse thread

- **Material** : carbon steel, C15
- **Safety factor** : MBL equals 4 x WLL
- **Standard** : generally to DIN 580
- **Finish** : self colour
electro-galvanised
- **Certification** : this product is supplied with a works certificate as standard

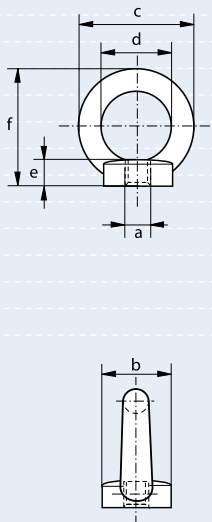
working load limit	diameter thread	diameter base	diameter eye outside	diameter eye inside	length	thickness base	height	weight per 100 pcs
tonnes	a mm	b mm	c mm	d mm	e mm	f mm	g mm	kg
0.07	6	20	36	20	13	6	36	6.0 *
0.14	8	20	36	20	13	6	36	6.0
0.23	10	25	45	25	17	8	45	10.3
0.34	12	30	54	30	20.5	10	53	17.7
0.49	14	35	63	35	27	12	60	27.7 *
0.7	16	35	63	35	27	12	62	28.0
0.9	18	40	72	40	30	14	71	40.5 *
1.2	20	40	72	40	30	14	71	42.4
1.5	22	45	81	45	35	14	80	67.3 *
1.8	24	50	90	50	36	18	90	83.4
2.5	27	50	90	50	36	18	90	122.0 *
3.6	30	65	108	60	45	22	109	166.0
4.3	33	65	108	60	45	22	110	216.0 *
5.1	36	75	126	70	54	26	128	265.0
6.1	39	75	126	70	54	26	130	334.0 *
7.0	42	85	144	80	63	30	147	403.0
8.0	45	85	144	80	63	30	150	521.0 *
8.6	48	100	166	90	68	35	168	632.0
11.5	56	110	184	100	78	38	187	880.0
16.0	64	120	206	110	90	42	208	1240.0

sizes marked * are additional and proportional to the specification

Eyenuts

metric coarse thread

- **Material** : carbon steel, C15
- **Safety factor** : MBL equals 4 x WLL
- **Standard** : generally to DIN 582
- **Finish** : self colour
electro-galvanised
- **Certification** : this product is supplied with a works certificate as standard



working load limit	diameter thread	diameter base	diameter eye outside	diameter eye inside	thickness base	height	weight per 100 pcs
tonnes	a mm	b mm	c mm	d mm	e mm	f mm	kg
0.07	6	20	36	20	8.5	36	5.2 *
0.14	8	20	36	20	8.5	36	5.2
0.23	10	25	45	25	10	45	9.4
0.34	12	30	54	30	11	53	16.0
0.49	14	35	63	35	13	60	22.0 *
0.7	16	35	63	35	13	62	24.0
1.2	20	40	72	40	16	71	35.2
1.5	22	45	81	45	18	80	58.6 *
1.8	24	50	90	50	20	90	70.6
2.5	27	50	90	50	20	90	102.0 *
3.6	30	65	108	60	25	109	132.0
4.3	33	65	108	60	25	110	170.0 *
5.1	36	75	126	70	30	128	208.0
6.1	39	75	126	70	30	130	260.0 *
7.0	42	85	144	80	35	147	311.0
8.0	45	85	144	80	35	150	407.0 *
8.6	48	100	166	90	40	168	502.0

sizes marked * are additional and proportional to the specification